



# PLANIGRAPH™ LG

## Composition

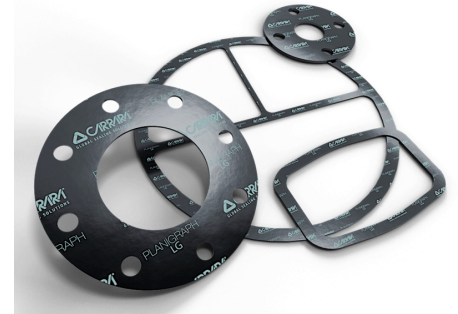
Pure graphite C > 98.0 %

## Characteristics

The LG gasketing sheet made by pure expanded graphite are great for applications on low pressure flanges. The pure graphite has modest tensile strength and therefore it's always recommended the thickness from 0.4 to 1.0 mm for the best sealing.

## Applications

Flat graphite gaskets for low pressure applications. Graphite isn't suitable for oxidizing fluids.



## Planigraph™ LG

LG expanded graphite flat gaskets are perfect for low pressure flange coupling applications. The pressure of use of the gasket is strongly correlated to the sealing surface and it is always advisable to check the quotient between [De-Di] and the thickness of the gasket where De and Di refer to the diameters of the parts of the gasket actually engaged by the compression of the flanges. The ratio must be at least 4 and the maximum load allowed on the gasket is 40 Mpa. The maximum operating pressure pointed in the grid is only for reference because the maximum assembly load requirements must always be met in correlation to the temperature and the active sealing surface (EN 1591-2: 2020).

## Tech Data

Planigraph™ LG			
Graphite density	gr/cm <sup>3</sup>		1.0
Carbon Content	%		> 98.0
Ash Content	%		< 2.0
Compressibility	%		40 - 50
Recovery	%		> 7
Gas Permeability DIN 3535	cm <sup>3</sup> /min		< 0.6
Relaxation stress DIN 52913	N/mm <sup>2</sup>		> 45
Temperature max with steam	°C		550
Temperature max with weak oxidants	°C		450
Temperature min cryo	°C		-196
Maximum assembly load RT	N/mm <sup>2</sup>		40
Maximum operating pressure	bar		40

- Never use the product to the maximum temperature and pressure associated. Consult the manufacturer for further information
- With weakly oxidizing agents and hot air the temperature must be limited to 450 °C
- Graphite and carbon cannot be used with oxidizing fluids
- With steam and non-oxidizing fluids, the temperature must be limited to 550°C
- The dimensional tolerances of the gasketing sheets are: W and L ± 5,0%, H ± 10,0%

Size	1.000 x 1.000 1.500 x 1.500	40" x 40" 60" x 60"
Thickness	0.5 ÷ 3.0	1/64" ÷ 1/8



The information in this publication, as well as any additional information provided to users, is based on experience and is shared to the best of our current knowledge. However, due to numerous factors beyond our knowledge and control that may affect the use of these products, no warranties are provided or implied regarding this information. The operating limits presented in this publication do not imply that these values can be applied simultaneously. Do not use the product at the maximum temperature and pressure values simultaneously. The maximum temperature is suitable only for short-term exposure under specific conditions. Specifications are subject to change without prior notice. The picture in the DS may not accurately depict the exact color and/or markings of the product.



**Carrara S.p.A.**  
Via Provinciale 1/E - 25030 Adro - BS - Italia  
tel. +39 030 7451121 / fax +39 030 7451130  
[www.carrara.it](http://www.carrara.it) - [info@carrara.it](mailto:info@carrara.it)