



# GLASS PTFE PACKING V9944

## Composition

E glass yarns  
PTFE impregnation  
Inert lubricant




## Characteristics

The glass fiber packing V9944 is braided with E glass yarns. The packing is impregnated with PTFE and lubricants silicon free. V9944 is a general-purpose packing, extremely versatile and of excellent quality, meeting the requirements of cost-effectiveness and ease of use. Available in the style V9900 without impregnation.

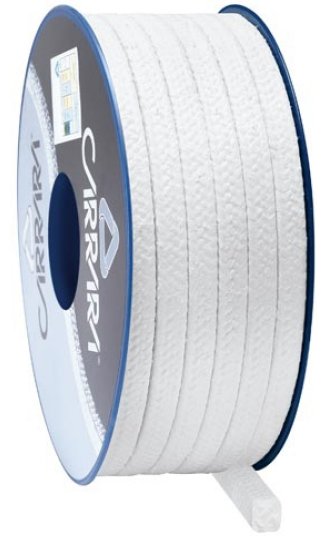
## Applications

Packing suitable for general uses in dynamic services.

## Tech Data

	P bar	lbf/in2	Vm/S	f/pm	pH	T°C	T°F
	60	900	1	200	2 ÷ 12	-50 ÷ 280	-60 ÷ 540
	40	600	2	400			
	20	300	15	3000			

- Never use the product to the maximum temperature and pressure associated. Consult the manufacturer for further information
- The peak temperature can be sustained for short exposures



## Glass PTFE Packing V9944

The glass fiber packing V9944 is braided with E glass yarns. The packing is impregnated with PTFE and lubricants silicon free. Available in the style V9900 without impregnation.



The information in this publication, as well as any additional information provided to users, is based on experience and is shared to the best of our current knowledge. However, due to numerous factors beyond our knowledge and control that may affect the use of these products, no warranties are provided or implied regarding this information. The operating limits presented in this publication do not imply that these values can be applied simultaneously. Do not use the product at the maximum temperature and pressure values simultaneously. The maximum temperature is suitable only for short-term exposure under specific conditions. Specifications are subject to change without prior notice. The picture in the DS may not accurately depict the exact color and/or markings of the product.



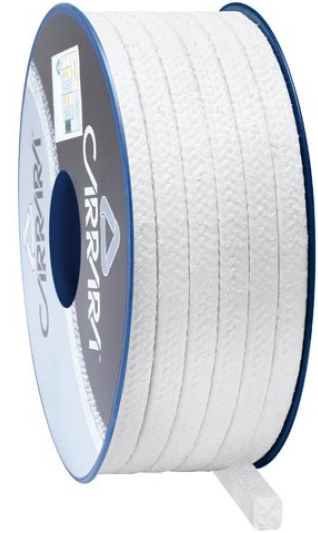
**Carrara S.p.A.**  
Via Provinciale 1/E - 25030 Adro - BS - Italia  
tel. +39 030 7451121 / fax +39 030 7451130  
[www.carrara.it](http://www.carrara.it) - [info@carrara.it](mailto:info@carrara.it)



# GLASS PTFE PACKING V9944

sezione mm	sezione inch	kg/box	lbs/box	mt/box	ft/box	mt/kg	ft/lbs
3	1/8"	1	2.2	50.0	164.0	50.0	74.5
4	-	1	2.2	33.3	109.3	33.3	49.6
5	3/16"	1	2.2	20.0	65.6	20.0	29.8
6	-	2.5	5.5	35.7	117.1	14.3	21.3
6.5	1/4"	2.5	5.5	31.3	102.7	12.5	18.7
8	5/16"	2.5	5.5	19.2	63.0	7.7	11.4
9.5	3/8"	2.5	5.5	14.7	48.2	5.9	8.8
10	-	2.5	5.5	12.5	41.0	5.0	7.4
11	7/16"	2.5	5.5	11.4	37.4	4.5	6.8
12	-	2.5	5.5	9.6	31.5	3.8	5.7
12.7	1/2"	2.5	5.5	8.6	28.2	3.4	5.1
14	9/16"	5	11	13.9	45.6	2.8	4.1
16	5/8"	5	11	10.6	34.8	2.1	3.2
17.5	-	5	11	9.6	31.5	1.9	2.9
18	11/16"	5	11	8.3	27.2	1.7	2.5
19	3/4"	5	11	7.7	25.3	1.5	2.3
22	7/8"	5	11	6.0	19.7	1.2	1.8
25.5	1"	5	11	4.7	15.4	0.9	1.4

- The weight per meter and the packaging's weight may have a tolerance of +/- 10%. Other sizes and packaging are available on demand.



The information in this publication, as well as any additional information provided to users, is based on experience and is shared to the best of our current knowledge. However, due to numerous factors beyond our knowledge and control that may affect the use of these products, no warranties are provided or implied regarding this information. The operating limits presented in this publication do not imply that these values can be applied simultaneously. Do not use the product at the maximum temperature and pressure values simultaneously. The maximum temperature is suitable only for short-term exposure under specific conditions. Specifications are subject to change without prior notice. The picture in the DS may not accurately depict the exact color and/or markings of the product.

**CARRARA**  
GLOBAL SEALING SOLUTIONS

**Carrara S.p.A.**,  
Via Provinciale 1/E - 25030 Adro - BS - Italia  
tel. +39 030 7451121 / fax +39 030 7451130  
[www.carrara.it](http://www.carrara.it) - [info@carrara.it](mailto:info@carrara.it)