



API 622 GRAPHITE PACKING GR8622

Composition

- Pure expanded mineral graphite
- Yarns reinforced with nickel-alloy wire
- Impregnated with special graphite-based compounds


Characteristics

The graphite packing GR8622 is characterized by the use of pure expanded mineral graphite, which ensures high sealing performance. Thanks to its Low Emission API std 622 3rd Edition certification, this packing is particularly suitable for applications where low gas emissions into the environment are required. The GR8622 is able to maintain its elastic properties and sealing performance over time, without the need for re-tightening. The yarn used offers very low weight loss during high-temperature operation and a low coefficient of friction, making it suitable for applications that require high slipperiness. In addition, the GR8622 gasket is able to withstand high pressures and extreme temperatures, ensuring reliable and long-lasting sealing.

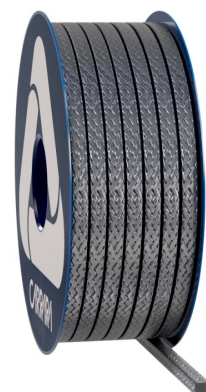
Applications

GR8622 is a special graphite packing designed for industrial valves used in low emissions service, also suitable for those with H.P./H.T. service. Made of pure expanded mineral graphite, this graphite packing ring for valve sealing is certified Low Emission API std 622 3rd Edition and maintains its elastic properties and sealing performance over time without the need for re-tightening. Additionally, the yarn provides a very low weight loss at high temperatures and offers a low coefficient of friction, ensuring high performance and reliability in industrial use.

Tech Data

	P bar	lbf/in2	Vm/S	f/pm	pH	T°C	T°F
	500	7500	2	400	0 ÷ 14	-200 ÷ 450 / 650	-330 ÷ 840 / 1200

- Never use the product at its maximum rated temperature and pressure. Consult the manufacturer for further information.
- The peak temperature can be sustained only for short exposure periods.
- With weakly oxidizing agents and hot air, the temperature must be limited to 450 °C.
- With steam and non-oxidizing fluids, the temperature must be limited to 650 °C.
- Flexible graphite and carbon yarns shall not be used with oxidizing fluids.



API 622 Graphite Packing GR8622

The Carrara graphite gland packing product range includes items made with all available graphite yarns, which, according to ASTM F2191 classification, are Type I—Continuous yarn, Type II—Staple yarn, and Type III—Flexible yarn. All graphite gland packings are protected with passive or active corrosion inhibitors (Grade A—Treated with corrosion inhibitor), although untreated gland packings (Grade B—No corrosion inhibitor) are available on demand. The performer and premium grade product ranges include Class 2 items, while the Industrial grade product range offers Class 1 products. Carrara graphite gland packings are specialized for each application, and a proper selection of the item allows for maximizing the sealing performance while reducing the component management costs.



The information provided in this publication, as well as that supplied to users in other forms, is based on our experience and communicated according to the best knowledge available. However, since numerous factors beyond our knowledge and control may influence the use of the products, no warranty, explicit or implicit, is given regarding such content. The operating limits indicated do not constitute confirmation that these values can be applied simultaneously. Avoid using the product at the maximum temperature and pressure limits. The maximum temperature is sustainable only for short periods under specific conditions. Specifications may be changed without notice. The images in the DS may not exactly represent the product, its color and/or marking.


GLOBAL SEALING SOLUTIONS

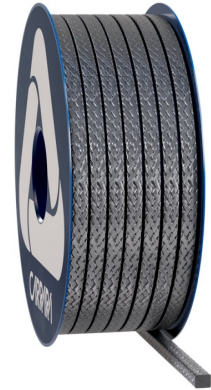
Carrara S.p.A.,
Via Provinciale 1/E - 25030 Adro - BS - Italia
tel. +39 030 7451121 carrara.it - info@carrara.it



API 622 GRAPHITE PACKING GR8622

sezione mm	sezione inch	kg/box	lbs/box	mt/box	ft/box	mt/kg	ft/lbs
3	1/8"	1	2.2	58.8	192.9	58.8	87.6
4	-	1	2.2	37.0	121.4	37.0	55.1
5	3/16"	1	2.2	22.2	72.8	22.2	33.1
6	-	2.5	5.5	38.5	126.3	15.4	22.9
6.5	1/4"	2.5	5.5	31.3	102.7	12.5	18.7
8	5/16"	2.5	5.5	21.7	71.2	8.7	12.9
9.5	3/8"	2.5	5.5	18.5	60.7	7.4	11.0
10	-	2.5	5.5	16.7	54.8	6.7	10.0
11	7/16"	2.5	5.5	13.9	45.6	5.6	8.3
12	-	2.5	5.5	11.6	38.1	4.6	6.9
12.7	1/2"	2.5	5.5	10.4	34.1	4.2	6.2
14	9/16"	5	11	17.2	56.4	3.4	5.1
16	5/8"	5	11	13.5	44.3	2.7	4.0
17.5	-	5	11	12.5	41.0	2.5	3.7
18	11/16"	5	11	11.1	36.4	2.2	3.3
19	3/4"	5	11	10.0	32.8	2.0	3.0
22	7/8"	5	11	7.5	24.6	1.5	2.2
25.5	1"	5	11	5.8	19.0	1.2	1.7

- The weight per meter and the packaging weight may have a tolerance of $\pm 10\%$. Other sizes and packaging options are available on request.



The information provided in this publication, as well as that supplied to users in other forms, is based on our experience and communicated according to the best knowledge available. However, since numerous factors beyond our knowledge and control may influence the use of the products, no warranty, explicit or implicit, is given regarding such content. The operating limits indicated do not constitute confirmation that these values can be applied simultaneously. Avoid using the product at the maximum temperature and pressure limits. The maximum temperature is sustainable only for short periods under specific conditions. Specifications may be changed without notice. The images in the DS may not exactly represent the product, its color and/or marking.

CARRARA
GLOBAL SEALING SOLUTIONS

Carrara S.p.A.,
Via Provinciale 1/E - 25030 Adro - BS - Italia
tel. +39 030 7451121 carrara.it - info@carrara.it