



SYNTHETIC PACKING N3104

Composition

Synthetic yarns impregnated with PTFE and lubricant



Characteristics

The pump gland packing N3104 is made with composite synthetic yarns impregnated with PTFE. It's available the graphitized compression packing N2109.

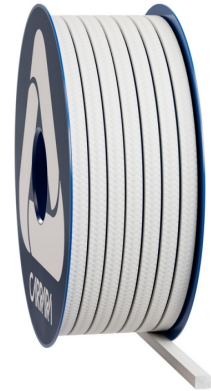
Applications

The pump gland packing N3104 is made with synthetic yarns impregnated with PTFE. N3104 is a braided packing for general sealing applications, extremely versatile, ease to use and high quality which meets the requirement of an economic product. This packing is available in the graphitized style N2109.

Tech Data

	P bar	lbf/in2	Vm/S	f/pm	pH	T°C	T°F
	80	1200	2	400	2 ÷ 12	-100 ÷ 250	-150 ÷ 480
	10	150	10	2000			

- Never use the product at its maximum rated temperature and pressure. Consult the manufacturer for further information.
- The peak temperature can be sustained only for short exposure periods.
- The weight per meter and the packaging weight may have a tolerance of ±10%. Other sizes and packaging options are available on request.



Synthetic Packing N3104

Efficiency of seals for a safer operation! These are the guidelines of Carrara in designing and manufacturing sealing systems. Our constant investment in research and development allows us to present innovative product solutions and at the same time make our technologies available to our customers to create customized solutions. Carrara's range of packings includes the Performer, Premium, and Basic lines. The Basic line is composed of high-quality packings for general applications. In the Basic line, there are packings made with the main industrial technical yarns such as expanded graphite, PAN graphite, dry and lubricated PTFE, graphite-filled PTFE, aramid fiber, and glass fiber. There are also packings made with acrylic yarn and those with plant-based yarns for applications that involve all water-related services.



The information provided in this publication, as well as that supplied to users in other forms, is based on our experience and communicated according to the best knowledge available. However, since numerous factors beyond our knowledge and control may influence the use of the products, no warranty, explicit or implicit, is given regarding such content. The operating limits indicated do not constitute confirmation that these values can be applied simultaneously. Avoid using the product at the maximum temperature and pressure limits. The maximum temperature is sustainable only for short periods under specific conditions. Specifications may be changed without notice. The images in the DS may not accurately represent the product's color and/or marking.

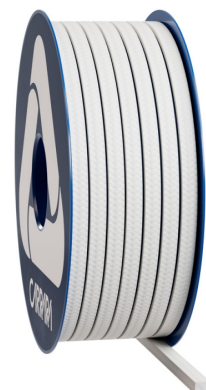


Carrara S.p.A.,
Via Provinciale 1/E - 25030 Adro - BS - Italia
tel. +39 030 7451121 www.carrara.it - info@carrara.it



SYNTHETIC PACKING N3104

sezione mm	sezione inch	kg/box	lbs/box	mt/box	ft/box	mt/kg	ft/lbs
3	1/8"	1	2.2	66.7	218.8	66.7	99.3
4	-	1	2.2	50.0	164.0	50.0	74.5
5	3/16"	1	2.2	25.0	82.0	25.0	37.2
6	-	2.5	5.5	50.0	164.0	20.0	29.8
6.5	1/4"	2.5	5.5	41.7	136.8	16.7	24.8
8	5/16"	2.5	5.5	31.3	102.7	12.5	18.7
9.5	3/8"	2.5	5.5	20.8	68.2	8.3	12.4
10	-	2.5	5.5	19.2	63.0	7.7	11.4
11	7/16"	2.5	5.5	15.6	51.2	6.3	9.3
12	-	2.5	5.5	13.2	43.3	5.3	7.9
12.7	1/2"	2.5	5.5	11.9	39.0	4.8	7.1
14	9/16"	5	11	20.0	65.6	4.0	6.0
16	5/8"	5	11	15.2	49.9	3.0	4.5
17.5	-	5	11	13.2	43.3	2.6	3.9
18	11/16"	5	11	11.9	39.0	2.4	3.5
19	3/4"	5	11	10.6	34.8	2.1	3.2
22	7/8"	5	11	8.6	28.2	1.7	2.6
25.5	1"	5	11	6.7	22.0	1.3	2.0



The information provided in this publication, as well as that supplied to users in other forms, is based on our experience and communicated according to the best knowledge available. However, since numerous factors beyond our knowledge and control may influence the use of the products, no warranty, explicit or implicit, is given regarding such content. The operating limits indicated do not constitute confirmation that these values can be applied simultaneously. Avoid using the product at the maximum temperature and pressure limits. The maximum temperature is sustainable only for short periods under specific conditions. Specifications may be changed without notice. The images in the DS may not accurately represent the product's color and/or marking.

CARRARA
GLOBAL SEALING SOLUTIONS

Carrara S.p.A.,
Via Provinciale 1/E - 25030 Adro - BS - Italia
tel. +39 030 7451121 www.carrara.it - info@carrara.it