



# PTFE PACKING PT5504S

## Composition

100% multifilaments PTFE yarns



## Characteristics

The PT5504S packing is a reliable solution for applications requiring the use of PTFE. Made with pure PTFE multifilament yarn, this packing shows great versatility as it can be used for many services requiring the use of PTFE, up to a maximum temperature of  $T=260^{\circ}\text{C}$ . Additionally, the PT5504S is suitable for use in cryogenic applications. It's important to remember that minimum/maximum temperatures and maximum pressures should not be associated. With these characteristics, PT5504S is a reliable option to be used in all those applications that require a high level of sealing and chemical resistance in almost the entire pH range.

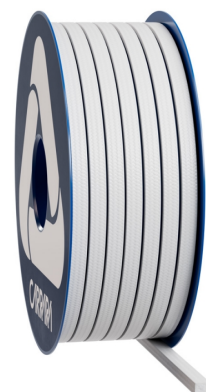
## Applications

The PTFE packing PT5504S can be used with all acidic and basic fluids compatible with PTFE, both for stem seals and general static seals, and for seals on reciprocating pumps and low-speed agitators. Available in the PT5504AS version for food use and PT5500 OX for oxygen service, the PT5504S packing guarantees high performance and is suitable for a wide range of static applications where fluid sealing is required at high pressures.

## Tech Data

	P bar	lbf/in <sup>2</sup>	Vm/S	f/pm	pH	T°C	T°F
	500	7500	1	200	0 ÷ 14	-200 ÷ 280	-330 ÷ 540
	150	2250	2	400			

- Never use the product at its maximum rated temperature and pressure. Consult the manufacturer for further information.
- The peak temperature can be sustained only for short exposure periods.



## PTFE Packing PT5504S

The family of the PTFE articles include a wide range of braided packings that can cover all applications that require the use of this material. White PTFE yarn is commonly used in gland sealing systems, both in static and dynamic applications with moderate-speed, thanks to the properties of this material, which ensures efficient and reliable sealing that can cover almost the entire pH range. The packings are available in both dry and lubricated configuration, in combination with other fibers such as aramid or with a rubber core. Among the special products are those intended for use with food and for oxygen service.



The information provided in this publication, as well as that supplied to users in other forms, is based on our experience and communicated according to the best knowledge available. However, since numerous factors beyond our knowledge and control may influence the use of the products, no warranty, explicit or implicit, is given regarding such content. The operating limits indicated do not constitute confirmation that these values can be applied simultaneously. Avoid using the product at the maximum temperature and pressure limits. The maximum temperature is sustainable only for short periods under specific conditions. Specifications may be changed without notice. The images in the DS may not accurately represent the product's color and/or marking.



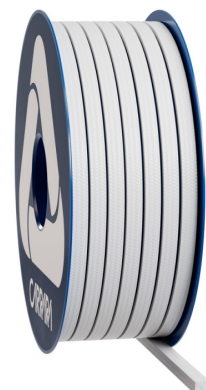
**Carrara S.p.A.**,  
Via Provinciale 1/E - 25030 Adro - BS - Italia  
tel. +39 030 7451121 [www.carrara.it](http://www.carrara.it) - [info@carrara.it](mailto:info@carrara.it)



# PTFE PACKING PT5504S

Sezione mm	Sezione inch	Kg/box	Lbs/box	Mt/box	Ft/box	Mt/kg	Ft/lbs
3	1/8"	1	2.2	58.8	192.9	58.8	87.6
4	-	1	2.2	3.7	12.1	3.7	5.5
5	3/16"	1	2.2	20.0	65.6	20.0	29.8
6	-	2.5	5.5	41.7	136.8	16.7	24.8
6.5	1/4"	2.5	5.5	35.7	117.1	14.3	21.3
8	5/16"	2.5	5.5	25.0	82.0	10.0	14.9
9.5	3/8"	2.5	5.5	18.5	60.7	7.4	11.0
10	-	2.5	5.5	16.7	54.8	6.7	10.0
11	7/16"	2.5	5.5	13.9	45.6	5.6	8.3
12	-	2.5	5.5	11.4	37.4	4.5	6.8
12.7	1/2"	2.5	5.5	10.4	34.1	4.2	6.2
14	9/16"	5	11	17.2	56.4	3.4	5.1
16	5/8"	5	11	13.0	42.7	2.6	3.9
17.5	-	5	11	11.6	38.1	2.3	3.5
18	11/16"	5	11	10.2	33.5	2.0	3.0
19	3/4"	5	11	9.3	30.5	1.9	2.8
22	7/8"	5	11	6.9	22.6	1.4	2.1
25.5	1"	5	11	5.4	17.7	1.1	1.6

- The weight per meter and the packaging weight may have a tolerance of  $\pm 10\%$ . Other sizes and packaging options are available on request.



The information provided in this publication, as well as that supplied to users in other forms, is based on our experience and communicated according to the best knowledge available. However, since numerous factors beyond our knowledge and control may influence the use of the products, no warranty, explicit or implicit, is given regarding such content. The operating limits indicated do not constitute confirmation that these values can be applied simultaneously. Avoid using the product at the maximum temperature and pressure limits. The maximum temperature is sustainable only for short periods under specific conditions. Specifications may be changed without notice. The images in the DS may not accurately represent the product's color and/or marking.

**CARRARA**  
GLOBAL SEALING SOLUTIONS

**Carrara S.p.A.**,  
Via Provinciale 1/E - 25030 Adro - BS - Italia  
tel. +39 030 7451121 [www.carrara.it](http://www.carrara.it) - [info@carrara.it](mailto:info@carrara.it)