



PTFE PACKING PT5504AS

Composition

100% multifilaments PTFE yarns

Characteristics

The PT5504AS packing is a reliable solution for applications requiring the use of PTFE. Made with pure PTFE multifilament yarn, this packing shows great versatility as it can be used for many services requiring the use of PTFE, up to a maximum temperature of $T=260^{\circ}\text{C}$. PT5504AS is suitable for use intended in contact with food. It's important to remember that minimum/maximum temperatures and maximum pressures should not be associated. With these characteristics, PT5504AS is a reliable option to be used in all those applications that require a high level of sealing and chemical resistance in almost the entire pH range.

Applications

The PTFE packing PT5504AS it is specific for contact food use but it can be used with all acidic and basic fluids compatible with PTFE, both for stem seals and general static seals, and for seals on reciprocating pumps and low-speed agitators. Available in the PT5504S and PT5500 OX for oxygen service, the PT5504AS packing guarantees high performance and is suitable for a wide range of static applications where fluid sealing is required at high pressures.

Tech Data

	P bar	lbf/in2	Vm/S	f/pm	pH	T°C	T°F
	500	7500	1	200	0 ÷ 14	-200 ÷ 280	-330 ÷ 540
	150	2250	2	400			

- Never use the product to the maximum temperature and pressure associated. Consult the manufacturer for further information
- The peak temperature can be sustained for short exposures



PTFE Packing PT5504AS

The family of the PTFE articles include a wide range of braided packings that can cover all applications that require the use of this material. White PTFE yarn is commonly used in gland sealing systems, both in static and dynamic applications with moderate-speed, thanks to the properties of this material, which ensures efficient and reliable sealing that can cover almost the entire pH range. The packings are available in both dry and lubricated configuration, in combination with other fibers such as aramid or with a rubber core. Among the special products are those intended for use with food and for oxygen service.



The information in this publication, as well as any additional information provided to users, is based on experience and is shared to the best of our current knowledge. However, due to numerous factors beyond our knowledge and control that may affect the use of these products, no warranties are provided or implied regarding this information. The operating limits presented in this publication do not imply that these values can be applied simultaneously. Do not use the product at the maximum temperature and pressure values simultaneously. The maximum temperature is suitable only for short-term exposure under specific conditions. Specifications are subject to change without prior notice. The picture in the DS may not accurately depict the exact color and/or markings of the product.



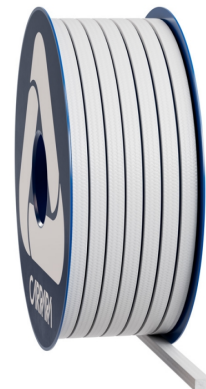
Carrara S.p.A.,
Via Provinciale 1/E - 25030 Adro - BS - Italia
tel. +39 030 7451121 / fax +39 030 7451130
www.carrara.it - info@carrara.it



PTFE PACKING PT5504AS

Sezione mm	Sezione inch	kg/box	lbs/box	mt/box	ft/box	mt/kg	ft/lbs
3	1/8"	1	2.2	58.8	192.9	58.8	87.6
4	-	1	2.2	37.0	121.4	37.0	55.1
5	3/16"	1	2.2	20.0	65.6	20.0	29.8
6	-	2.5	5.5	41.7	136.8	16.7	24.8
6.5	1/4"	2.5	5.5	35.7	117.1	14.3	21.3
8	5/16"	2.5	5.5	25.0	82.0	10.0	14.9
9.5	3/8"	2.5	5.5	18.5	60.7	7.4	11.0
10	-	2.5	5.5	16.7	54.8	6.7	10.0
11	7/16"	2.5	5.5	13.9	45.6	5.6	8.3
12	-	2.5	5.5	11.4	37.4	4.5	6.8
12.7	1/2"	2.5	5.5	10.4	34.1	4.2	6.2
14	9/16"	5	11	17.2	56.4	3.4	5.1
16	5/8"	5	11	13.0	42.7	2.6	3.9
17.5	-	5	11	11.6	38.1	2.3	3.5
18	11/16"	5	11	10.2	33.5	2.0	3.0
19	3/4"	5	11	9.3	30.5	1.9	2.8
22	7/8"	5	11	6.9	22.6	1.4	2.1
25.5	1"	5	11	5.4	17.7	1.1	1.6

● The weight per meter and the packaging's weight may have a tolerance of +/- 10%. Other sizes and packaging are available on demand.



The information in this publication, as well as any additional information provided to users, is based on experience and is shared to the best of our current knowledge. However, due to numerous factors beyond our knowledge and control that may affect the use of these products, no warranties are provided or implied regarding this information. The operating limits presented in this publication do not imply that these values can be applied simultaneously. Do not use the product at the maximum temperature and pressure values simultaneously. The maximum temperature is suitable only for short-term exposure under specific conditions. Specifications are subject to change without prior notice. The picture in the DS may not accurately depict the exact color and/or markings of the product.

CARRARA
GLOBAL SEALING SOLUTIONS

Carrara S.p.A.,
Via Provinciale 1/E - 25030 Adro - BS - Italia
tel. +39 030 7451121 / fax +39 030 7451130
www.carrara.it - info@carrara.it