



PTFE PACKING 55B

Composition

Unsintered extruded PTFE filled with inorganic lubricant.


Characteristics

55B is an unsintered extruded pure PTFE filled with inorganic lubricant. The 55B packing minimizes the damaging of the pump shaft thanks to its softness. Due to the high PTFE content, 55B resists the chemical attacks throughout the whole pH array with the exception of fluorinated and alkaline compounds.

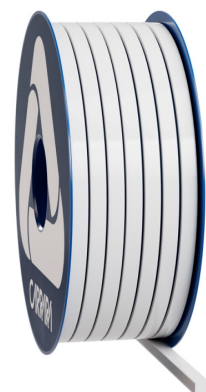
Applications

The packing 55B is suitable for all fluids able to work with the PTFE as acids and alkalis, oils, gases, solvents and steam. 55B can be used on the centrifugal and piston pumps, mixers, agitators and expansion joints. Suitable for use in contact with food.

Tech Data

	P bar	lbf/in2	Vm/S	f/pm	pH	T°C	T°F
	10	150	10	2000	0 ÷ 14	-50 ÷ 260	-60 ÷ 500

- Never use the product at its maximum rated temperature and pressure. Consult the manufacturer for further information.
- The peak temperature can be sustained only for short exposure periods.



PTFE Packing 55B

The PTFE packing 55B is intended to suit the centrifugal pumps or dynamic components featured by low speed and pressure. Economical and efficient, 55B is the simplest solution for these general services.



The information provided in this publication, as well as that supplied to users in other forms, is based on our experience and communicated according to the best knowledge available. However, since numerous factors beyond our knowledge and control may influence the use of the products, no warranty, explicit or implicit, is given regarding such content. The operating limits indicated do not constitute confirmation that these values can be applied simultaneously. Avoid using the product at the maximum temperature and pressure limits. The maximum temperature is sustainable only for short periods under specific conditions. Specifications may be changed without notice. The images in the DS may not accurately represent the product's color and/or marking.



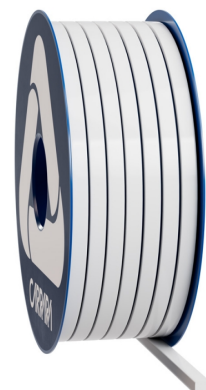
Carrara S.p.A.,
Via Provinciale 1/E - 25030 Adro - BS - Italia
tel. +39 030 7451121 www.carrara.it - info@carrara.it



PTFE PACKING 55B

sezione mm	sezione inch	kg/box	lbs/box	mt/box	ft/box	mt/kg	ft/lbs
3	1/8"	1	2.2	55.6	182.4	55.6	82.8
4	-	1	2.2	28.6	93.8	28.6	42.6
5	3/16"	1	2.2	20.0	65.6	20.0	29.8
6	-	2.5	5.5	35.7	117.1	14.3	21.3
6.5	1/4"	2.5	5.5	29.4	96.5	11.8	17.5
8	5/16"	2.5	5.5	20.8	68.2	8.3	12.4
9.5	3/8"	2.5	5.5	13.8	45.3	5.5	8.2
10	-	2.5	5.5	13.9	45.6	5.6	8.3
11	7/16"	2.5	5.5	11.5	37.7	4.6	6.8
12	-	2.5	5.5	9.3	30.5	3.7	5.5
12.7	1/2"	2.5	5.5	8.6	28.2	3.4	5.1
14	9/16"	5	11	13.5	44.3	2.7	4.0
16	5/8"	5	11	10.8	35.4	2.2	3.2
17.5	-	5	11	9.6	31.5	1.9	2.9
18	11/16"	5	11	8.6	28.2	1.7	2.6
19	3/4"	5	11	7.7	25.3	1.5	2.3
22	7/8"	5	11	5.7	18.7	1.1	1.7
25.5	1"	5	11	4.2	13.8	0.8	1.3

- The weight per meter and the packaging weight may have a tolerance of $\pm 10\%$. Other sizes and packaging options are available on request.



The information provided in this publication, as well as that supplied to users in other forms, is based on our experience and communicated according to the best knowledge available. However, since numerous factors beyond our knowledge and control may influence the use of the products, no warranty, explicit or implicit, is given regarding such content. The operating limits indicated do not constitute confirmation that these values can be applied simultaneously. Avoid using the product at the maximum temperature and pressure limits. The maximum temperature is sustainable only for short periods under specific conditions. Specifications may be changed without notice. The images in the DS may not accurately represent the product's color and/or marking.

CARRARA
GLOBAL SEALING SOLUTIONS

Carrara S.p.A.,
Via Provinciale 1/E - 25030 Adro - BS - Italia
tel. +39 030 7451121 www.carrara.it - info@carrara.it