



PACKING GR48B

Composition

High carbon content flexible graphite yarns.

Characteristics

GR48B is a high-quality expanded mineral graphite packing made of high carbon content expanded graphite yarns. Its ability to withstand extreme temperatures and high pressures, combined with low thermal conductivity, make it an ideal choice for many industrial applications, where ease of cutting and installation is combined with extraordinary versatility. Thanks to its high-quality construction and great reliability, the expanded mineral graphite packing GR48B is a winning choice for those looking for a versatile and high-performance product for their industrial needs. Additionally, GR48B packing is also available in the reinforced version GR48BR.

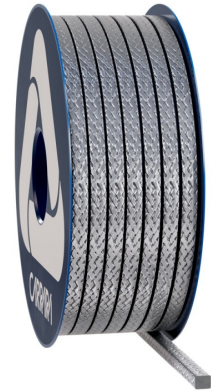
Applications

The flexible mineral graphite packing GR48B is an ideal solution for sealing industrial valves of all types, thanks to its extreme flexibility and versatility. Due to the high carbon content in the expanded graphite yarns, this packing is able to resist multiple industrial fluids and gases, with the exception of strong oxidizers. It can operate at a maximum pressure of 100 bar without the use of anti-extrusion rings. In the case of dynamic seals, however, it is recommended to use it with the help of anti-extrusion rings to ensure even better performance and extend its lifespan.

Tech Data

	P bar	lbf/in ²	Vm/S	f/pm	pH	T°C	°F
	300	4500	1	200	0 ÷ 14	-100 ÷ 400(1)/550(2)	-150 ÷ 750(1)/1020(2)
	20	300	2	400	0 ÷ 14	-100 ÷ 400(1)/550(2)	-150 ÷ 750(1)/1020(2)
	40	600	25	5000	0 ÷ 14	-100 ÷ 400(1)/550(2)	-150 ÷ 750(1)/1020(2)

- Never use the product at its maximum rated temperature and pressure. Consult the manufacturer for further information.
- With weakly oxidizing agents and hot air, the temperature must be limited to 450 °C.
- With steam and non-oxidizing fluids, the temperature must be limited to 650 °C.
- The packing shall be used with wiper anti-extrusion rings in dynamic applications and in valves operating above 100 bar



Packing GR48B

The Carrara graphite gland packing product range includes items made with all available graphite yarns, which, according to ASTM F2191 classification, are Type I—Continuous yarn, Type II—Staple yarn, and Type III—Flexible yarn. All graphite gland packings are protected with passive or active corrosion inhibitors (Grade A—Treated with corrosion inhibitor), although untreated gland packings (Grade B—No corrosion inhibitor) are available on demand. The performer and premium grade product ranges include Class 2 items, while the Industrial grade product range offers Class 1 products. Carrara graphite gland packings are specialized for each application, and a proper selection of the item allows for maximizing the sealing performance while reducing the component management costs.



The information provided in this publication, as well as that supplied to users in other forms, is based on our experience and communicated according to the best knowledge available. However, since numerous factors beyond our knowledge and control may influence the use of the products, no warranty, explicit or implicit, is given regarding such content. The operating limits indicated do not constitute confirmation that these values can be applied simultaneously. Avoid using the product at the maximum temperature and pressure limits. The maximum temperature is sustainable only for short periods under specific conditions. Specifications may be changed without notice. The images in the DS may not exactly represent the product, its color and/or marking.



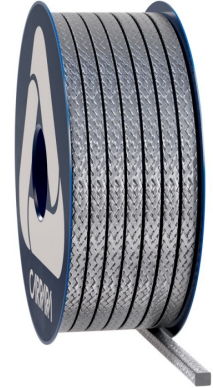
Carrara S.p.A.
Via Provinciale 1/E - 25030 Adro - BS - Italia
tel. +39 030 7451121 carrara.it - info@carrara.it



PACKING GR48B

sezione mm	sezione inch	kg/box	lbs/box	mt/box	ft/box	mt/kg	ft/lbs
3	1/8"	1	2.2	76.9	252.3	76.9	114.5
4	-	1	2.2	43.5	142.7	43.5	64.8
5	3/16"	1	2.2	28.6	93.8	28.6	42.6
6	-	2.5	5.5	52.1	170.9	20.8	31.0
6.5	1/4"	2.5	5.5	44.6	146.3	17.9	26.6
8	5/16"	2.5	5.5	29.8	97.8	11.9	17.8
9.5	3/8"	2.5	5.5	21.2	69.6	8.5	12.6
10	-	2.5	5.5	19.2	63.0	7.7	11.4
11	7/16"	2.5	5.5	15.8	51.8	6.3	9.4
12	-	2.5	5.5	13.2	43.3	5.3	7.9
12.7	1/2"	2.5	5.5	12.5	41.0	5.0	7.4
14	9/16"	5	11	20.0	65.6	4.0	6.0
16	5/8"	5	11	14.7	48.2	2.9	4.4
17.5	-	5	11	13.3	43.6	2.7	4.0
18	11/16"	5	11	11.9	39.0	2.4	3.5
19	3/4"	5	11	10.6	34.8	2.1	3.2
22	7/8"	5	11	7.9	25.9	1.6	2.4
25.5	1"	5	11	6.3	20.7	1.3	1.9

- The weight per meter and the packaging weight may have a tolerance of $\pm 10\%$. Other sizes and packaging options are available on request.



The information provided in this publication, as well as that supplied to users in other forms, is based on our experience and communicated according to the best knowledge available. However, since numerous factors beyond our knowledge and control may influence the use of the products, no warranty, explicit or implicit, is given regarding such content. The operating limits indicated do not constitute confirmation that these values can be applied simultaneously. Avoid using the product at the maximum temperature and pressure limits. The maximum temperature is sustainable only for short periods under specific conditions. Specifications may be changed without notice. The images in the DS may not exactly represent the product, its color and/or marking.

CARRARA
GLOBAL SEALING SOLUTIONS

Carrara S.p.A.,
Via Provinciale 1/E - 25030 Adro - BS - Italia
tel. +39 030 7451121 carrara.it - info@carrara.it