



# CONTROLLER 4 EVO

## Composition

- Rings: Flexible graphite VALVOGRAPH E
- Wiper rings: Multi-layer graphite rings inserted in steel


## Characteristics

The Controller 4 Evolution is a stem packing designed for high-pressure applications. Equipped with special multi-layer graphite wiper rings inserted in steel, it offers excellent recovery combined with extremely high aging resistance. It can easily work with all industrial fluids in high-pressure and temperature services, in compliance with the weight loss requirements of EN 14772 - Section 6.7.

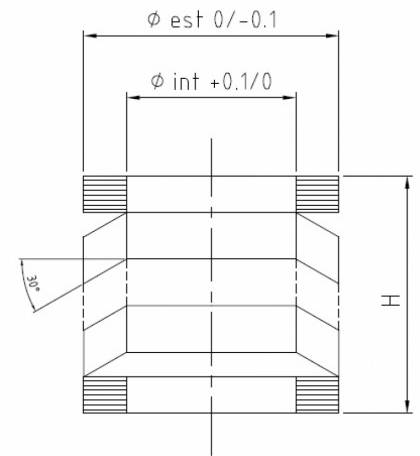
## Applications

Specifically for high-pressure and temperature industrial valve services.

## Tech Data

|   | bar | lb/in2 | m/s | fpm | pH     | T°C              | T°F               |
|---|-----|--------|-----|-----|--------|------------------|-------------------|
|  | 500 | 7500   | 1   | 200 | 0 ÷ 14 | -200 ÷ 450 / 650 | -328 ÷ 840 / 1200 |

- Never use the product to the maximum temperature and pressure associated. Consult the manufacturer for further information
- The peak temperature can be sustained for short exposures
- With weakly oxidizing agents and hot air the temperature must be limited to 450 ° C
- With steam and non-oxidizing fluids the temperature must be limited to 650 ° C



## Controller 4 EVO

The Controller 4 Evolution is an innovative graphite seal designed for quarter-turn valves compliant with the API std 622 3rd Edition standard. This new model, called XCTR4 Evolution, joins the family of API std 622 3rd Edition qualified products, offering advanced performance for industrial applications.



The information in this publication, as well as any additional information provided to users, is based on experience and is shared to the best of our current knowledge. However, due to numerous factors beyond our knowledge and control that may affect the use of these products, no warranties are provided or implied regarding this information. The operating limits presented in this publication do not imply that these values can be applied simultaneously. Do not use the product at the maximum temperature and pressure values simultaneously. The maximum temperature is suitable only for short-term exposure under specific conditions. Specifications are subject to change without prior notice. The picture in the DS may not accurately depict the exact color and/or markings of the product.



**Carrara S.p.A.**,  
Via Provinciale 1/E - 25030 Adro - BS - Italia  
tel. +39 030 7451121 / fax +39 030 7451130  
[www.carrara.it](http://www.carrara.it) - [info@carrara.it](mailto:info@carrara.it)