



# ARAMID PACKING PA3604

## Composition

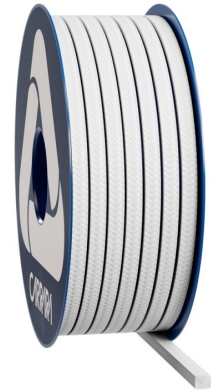
Meta aramid fibres  
PTFE impregnation  
Lubricant silicon free

## Characteristics

The packing for pumps PA3604 is made with 100% meta aramid yarns impregnated with pure P.T.F.E. and lubricant silicon free. The coefficient of friction of this packing is lower than the para aramid packing with equivalent yarn's tensile strength. This compression packing is suitable for any dynamic applications with abrasive fluids with which the meta aramid yarns are compatible.

## Applications

Packing for pumps and mixers



## Aramid Packing PA3604

The packing for pumps PA3604 is made with 100% meta aramid yarns impregnated with pure P.T.F.E. and lubricant silicon free.

## Tech Data

	P bar	lbf/in2	Vm/S	f/pm	pH	T°C	T°F
	80	1200	2	400	4 ÷ 10	-50 ÷ 250	-60 ÷ 480
	20	300	15	3000			

- Never use the product at its maximum rated temperature and pressure. Consult the manufacturer for further information.
- The peak temperature can be sustained only for short exposure periods.



The information provided in this publication, as well as that supplied to users in other forms, is based on our experience and communicated according to the best knowledge available. However, since numerous factors beyond our knowledge and control may influence the use of the products, no warranty, explicit or implicit, is given regarding such content. The operating limits indicated do not constitute confirmation that these values can be applied simultaneously. Avoid using the product at the maximum temperature and pressure limits. The maximum temperature is sustainable only for short periods under specific conditions. Specifications may be changed without notice. The images in the DS may not accurately represent the product's color and/or marking.



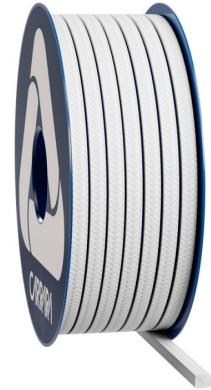
**Carrara S.p.A.**,  
Via Provinciale 1/E - 25030 Adro - BS - Italia  
tel. +39 030 7451121 [www.carrara.it](http://www.carrara.it) - [info@carrara.it](mailto:info@carrara.it)



# ARAMID PACKING PA3604

Sezione mm	Sezione inch	kg/box	lbs/box	mt/box	ft/box	mt/kg	ft/lbs
3	1/8"	1	2.2	100.0	328.1	100.0	149.0
4	-	1	2.2	41.7	136.8	41.7	62.1
5	3/16"	1	2.2	25.0	82.0	25.0	37.2
6	-	2.5	5.5	41.7	136.8	16.7	24.8
6.5	1/4"	2.5	5.5	37.3	122.4	14.9	22.2
8	5/16"	2.5	5.5	25.0	82.0	10.0	14.9
9.5	3/8"	2.5	5.5	19.2	63.0	7.7	11.4
10	-	2.5	5.5	16.7	54.8	6.7	10.0
11	7/16"	2.5	5.5	13.9	45.6	5.6	8.3
12	-	2.5	5.5	11.9	39.0	4.8	7.1
12.7	1/2"	2.5	5.5	10.4	34.1	4.2	6.2
14	9/16"	5	11	17.2	56.4	3.4	5.1
16	5/8"	5	11	13.5	44.3	2.7	4.0
17.5	-	5	11	11.5	37.7	2.3	3.4
18	11/16"	5	11	10.4	34.1	2.1	3.1
19	3/4"	5	11	9.4	30.8	1.9	2.8
22	7/8"	5	11	7.4	24.3	1.5	2.2
25.5	1"	5	11	5.7	18.7	1.1	1.7

● The weight per meter and the packaging weight may have a tolerance of  $\pm 10\%$ . Other sizes and packaging options are available on request.



The information provided in this publication, as well as that supplied to users in other forms, is based on our experience and communicated according to the best knowledge available. However, since numerous factors beyond our knowledge and control may influence the use of the products, no warranty, explicit or implicit, is given regarding such content. The operating limits indicated do not constitute confirmation that these values can be applied simultaneously. Avoid using the product at the maximum temperature and pressure limits. The maximum temperature is sustainable only for short periods under specific conditions. Specifications may be changed without notice. The images in the DS may not accurately represent the product's color and/or marking.

**CARRARA**  
GLOBAL SEALING SOLUTIONS

**Carrara S.p.A.**,  
Via Provinciale 1/E - 25030 Adro - BS - Italia  
tel. +39 030 7451121 [www.carrara.it](http://www.carrara.it) - [info@carrara.it](mailto:info@carrara.it)